



Fairfax Drive, Worcester, WR2 5TZ

Guide Price £410,000

🛏 4 🚿 2 🛋 2



Summary

A four bedroom detached family home with kitchen/diner and two further reception rooms. This previous show home for the development benefits from a high specification finish, including quartz worktops, beautiful light fittings and flooring. Two bathrooms and utility with WC. The current owners have made further improvements including landscaping the garden. Viewing highly recommended to really appreciate what this home has to offer.

Description

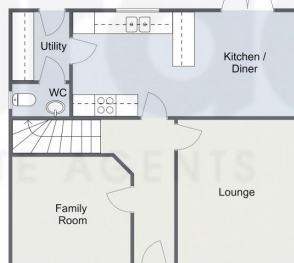
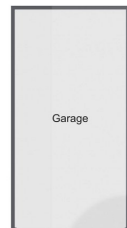
Access is gained via front door into reception hall. The reception has doors into all ground floor accommodation and turning staircase to first floor. The breakfast kitchen is on the back of the house and leads out on to the garden. The kitchen has base and eye level units with quartz work surface. Built in fridge freezer, oven and hob. Dishwasher and one and half sink with drainer set to work surface. Window to rear aspect and French doors out on to garden. Spotlights to ceiling and door in to utility and Wc. Utility has door out on to rear garden, continuation of built in units and space for washing machine. Door into WC. Lounge with window to front aspect. Family room with window to front aspect. To the first floor are four bedrooms with ensuite to main bedroom and built in wardrobes to three of the bedrooms. Family bathroom. An impressive feature is the size of the landing and offers good space. The property benefits from gas central heating, double glazing, landscaped garden and detached single garage. Drive to front.

Outside

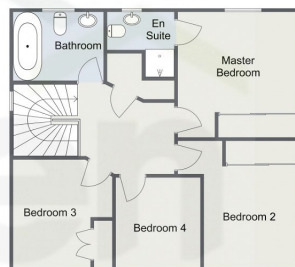
Access is gained via kitchen, utility and side of property. This attractive landscaped garden has a two tiered lawn section with steps leading down to it from the patio area. Enclosed by a mixture of fencing and brick wall. The lawns are framed with sleepers and a small white stone area with small shrubs and plants. To the front is a driveway providing access to garage.



Fairfax Way, Worcester
Ground Floor



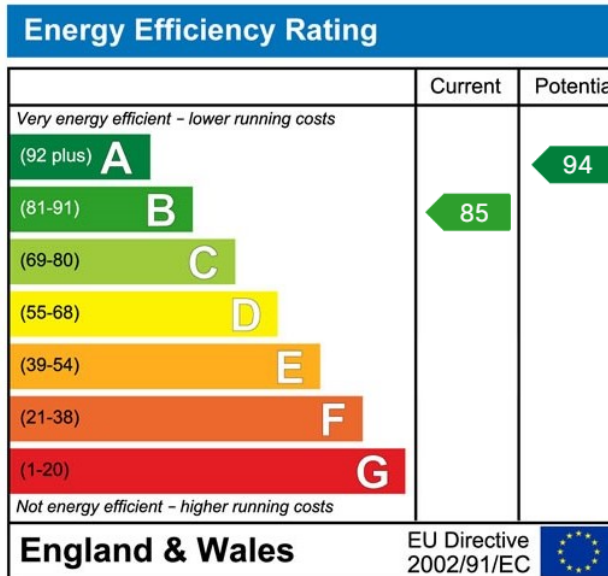
First Floor



Total Area Approx
129.7 Sq M
1396.1 Sq Ft

For illustrative purposes only. Decorative finishes, fixtures & fittings do not represent the current state of the property. Measurements are approximate & not to scale. Floor Plans made using RoomSketcher.

- Double Fronted Detached
- Ex Show Home
- Breakfast Kitchen
- Utility & Wc
- Lounge and Family Room
- Four Bedrooms
- Two Bathrooms
- Landscape Garden & Garage



For more information on this house or to arrange a viewing please call the office on:

01905 958 290

Alternatively, you can scan the QR to view all of the details of this property online.

